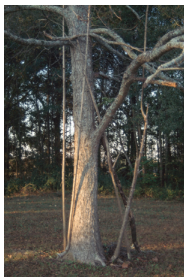
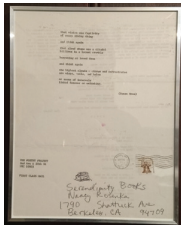




Stephen Ratcliffe
"4,189 Matches on Windowsill : one + one + one", 2017
matches and stone
33.02 x 7.62 x 13.335 cm (13 x 3 x 5.25 in)

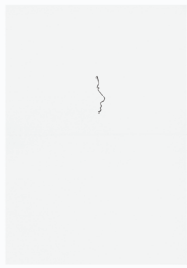


Dinah Young
Color 35mm slides documenting the work of Dinah Young (1932-) from 1997 – 2001 in Newbern, Alabama



Susan Howe
that vision was..., 1976
photocopy on paper
21.59 x 27.9 cm (8.5 x 11 in)

Loren Connors
Woman of Sorrows, 2017
audio recording, looped
duration: 10.20 min



Rob Halverson
Untitled, 2017
ink on paper
17.78 x 25.4 cm (7 x 10 in)



Rob Halverson
Untitled, 2017
pen and ink on paper
17.78 x 25.4 cm (7 x 10 in)



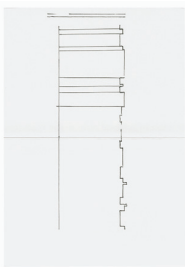
Rob Halverson
Inside of - head full - it's end - in row each - face made parts looking out - as thin rim - down forehead nose lips chin breeze, 2017
pen and solidified paint on paper
17.78 x 25.4 cm (7 x 10 in)



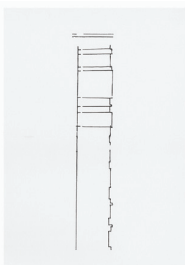
Rob Halverson
Untitled, 2017
ink on paper
17.78 x 25.4 cm (7 x 10 in)



Rob Halverson
The end - like they say - thus conceived - end - wind on top - tall grasses - oh invisible finger down my side - removes, 2017
die cut paper
17.78 x 25.4 cm (7 x 10 in)



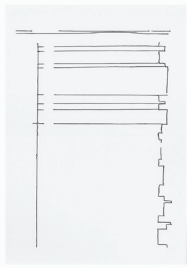
Rob Halverson
Each moment is, yet each follows frm one before it and proceeds into next (1...), 2017
pen on paper
17.78 x 25.4 cm (7 x 10 in)



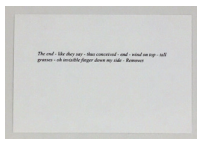
Rob Halverson
Each moment is, yet each follows frm one before it and proceeds into next (2...), 2017
pen on paper
17.78 x 25.4 cm (7 x 10 in)



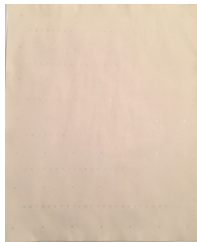
Rob Halverson
Each moment is, yet each follows frm one before it and proceeds into next (3...), 2017
pen on paper
17.78 x 25.4 cm (7 x 10 in)



Rob Halverson
Each moment is, yet each follows from one before it and proceeds into next (4...), 2017
pen on paper
17.78 x 25.4 cm (7 x 10 in)



Rob Halverson
The end - like they say..., 2017
offset print on paper
10.16 x 15.24 cm (4 x 6 in)
edition of 40 + 2 AP's



Rob Halverson
R R R R R, 2013 – 2017
foil stamp and tea on paper
17.78 x 25.4 cm (13.5 x 16.5 in)
edition of 4 + 2 AP's